

**HUBER stainless steel
equipment – quality that
reliably impresses.**



**CERTAINLY THE
RIGHT CHOICE –
STAINLESS STEEL
EQUIPMENT**

HUBER Safe Access Solutions – high-quality stainless steel equipment

Our products, including manhole covers, technical doors and aeration/deaeration for buildings in the drinking water supply and wastewater sector, we are focused on security, quality and trust.

Learn about our first-class solutions that help protect and improve infrastructure. We offer versatile products in the areas of **occupational safety, property surveillance and hygiene**.

We offer safe access solutions and innovative stainless steel equipment parts for:

- ▶ Drinking water production, treatment, storage, distribution
- ▶ Wastewater treatment
- ▶ Stormwater overflow tanks
- ▶ Biogas plants
- ▶ Access passageway

Manhole equipment:

Manholes fulfil an important task in water supply as well as wastewater disposal. The applications are very diverse, but they all have one thing in common: the operators are responsible for safe access. The highest quality and reliability are our benchmark.

- ▶ Manhole covers
- ▶ Ladders and access systems
- ▶ Chimneys
- ▶ Accessories such as safety guards and access equipment

Technical doors:

Customised doors guarantee security. The perfect HUBER door for your individual requirements, whether in a new construction project or for retrofitting.

- ▶ Stainless steel doors
- ▶ Security doors
- ▶ Chlorine room doors
- ▶ Watertight doors
- ▶ Pressure-tight doors
- ▶ Manhole and inspection hatches
- ▶ Louvres and windows

Reservoir ventilation and air filtration:

Reducing risks to hygiene. Germs, viruses, spores and pollen are a burden on hygiene in your drinking water. We offer reliable hygiene with the appropriate filter technology and a customised complete solution for your drinking water reservoir.



HUBER Manhole Cover SD1.



HUBER Safety Door TT2.1.



HUBER Aeration/Deaeration Plant L361.



**CREATE SECURE
ACCESS – FOR
FACILITIES AND
OPERATING STAFF**

Creating secure access solutions – for operators and staff

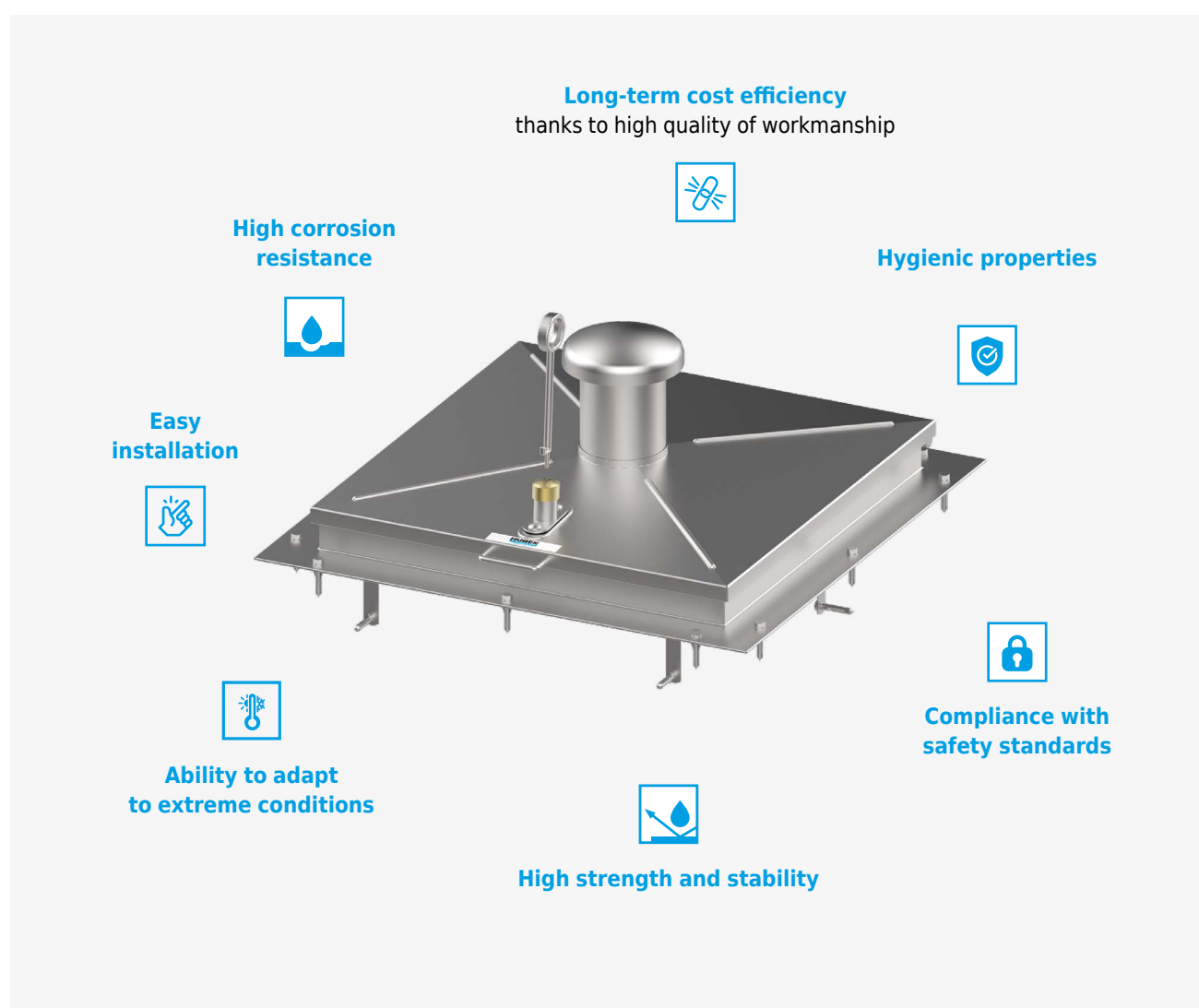
Secure access solutions such as manhole covers and safety doors contribute significantly to the protection of assets.

- ▶ Help to **comply with safety standards and regulations**
- ▶ Guarantee **safety for operating staff**

Reduce the risk of accidents and injuries with additional safeguards, such as fall arresters under manhole covers. Safety ladders and access equipment also enable safe access to hard-to-reach areas.

All security measures can be used universally and can be retrofitted to our manhole covers and technical doors at any time.

Advantages of HUBER stainless steel equipment parts:



HUBER Manhole Cover SD1. The figure shown here may contain special accessories.



Would you like more information about our manhole covers?

Technical data sheets and further product information is available at www.huber.co.uk/stainless-steel-equipment-uk

Secure manhole covers

Secure your manholes correctly with HUBER manhole covers made of stainless steel:

- ▶ **Easy opening thanks to supporting gas struts.** These allow effortless opening. Maintenance and inspections can be carried out without additional tools.
- ▶ Manhole covers can be equipped with **reliable fall arresters.** They ensure safe access and work in manholes.
- ▶ **Access systems with optional safety runners** enable stable and safe ascent and descent in the manhole.
- ▶ **Maximum safety** when carrying out maintenance work thanks to reliable load capacity.

HUBER manhole covers also offer many other advantages:

- ▶ **Robust design** for long service life and resistance to harsh environments.
- ▶ High-quality stainless steel material for **maximum corrosion resistance** and **hygiene.**
- ▶ Easy installation and maintenance for **efficient use** and uptime.
- ▶ **Adaptability** to different manhole sizes and requirements for versatile application.



HUBER Manhole Cover SD2, weatherproof, round.



HUBER Manhole Cover SD1.



HUBER Manhole Cover SD7, accessible.



Already thinking about retrofitting?

Our accessories can be retrofitted at any time

- ▶ Boost security standards
- ▶ Improve safety at work for equipment and operating staff

Safety climbing ladders

- ▶ In accordance with applicable safety standards and regulations
- ▶ Guarantee safety at work
- ▶ Versatile, for various indoor and outdoor applications
- ▶ Option to add a guard rail



HUBER Safety Access Ladder SiS1.

Pressure-tight doors

- ▶ Ground level doors allow direct access from the side. Eliminating access from the top. This **minimises the risk of falls or accidents** that may occur when entering from above.

Access points are designed to be safer and more efficient, making it easier to maintain and inspect your equipment.



HUBER Pressure Door TT7.

Additional security options for your staff

Accessories such as **guard grates** and **access equipment** for manhole covers contribute significantly to the occupational safety of operators and staff, as they fulfil essential safety functions such as preventing falls and providing safe and stable access options:

Guard grates

- ▶ Universally applicable
- ▶ Can be retrofitted below manhole covers
- ▶ Non-standard sizes available
- ▶ Removable version to lift out of round manholes



HUBER Guard Grate ASG.P.

Entrance aids

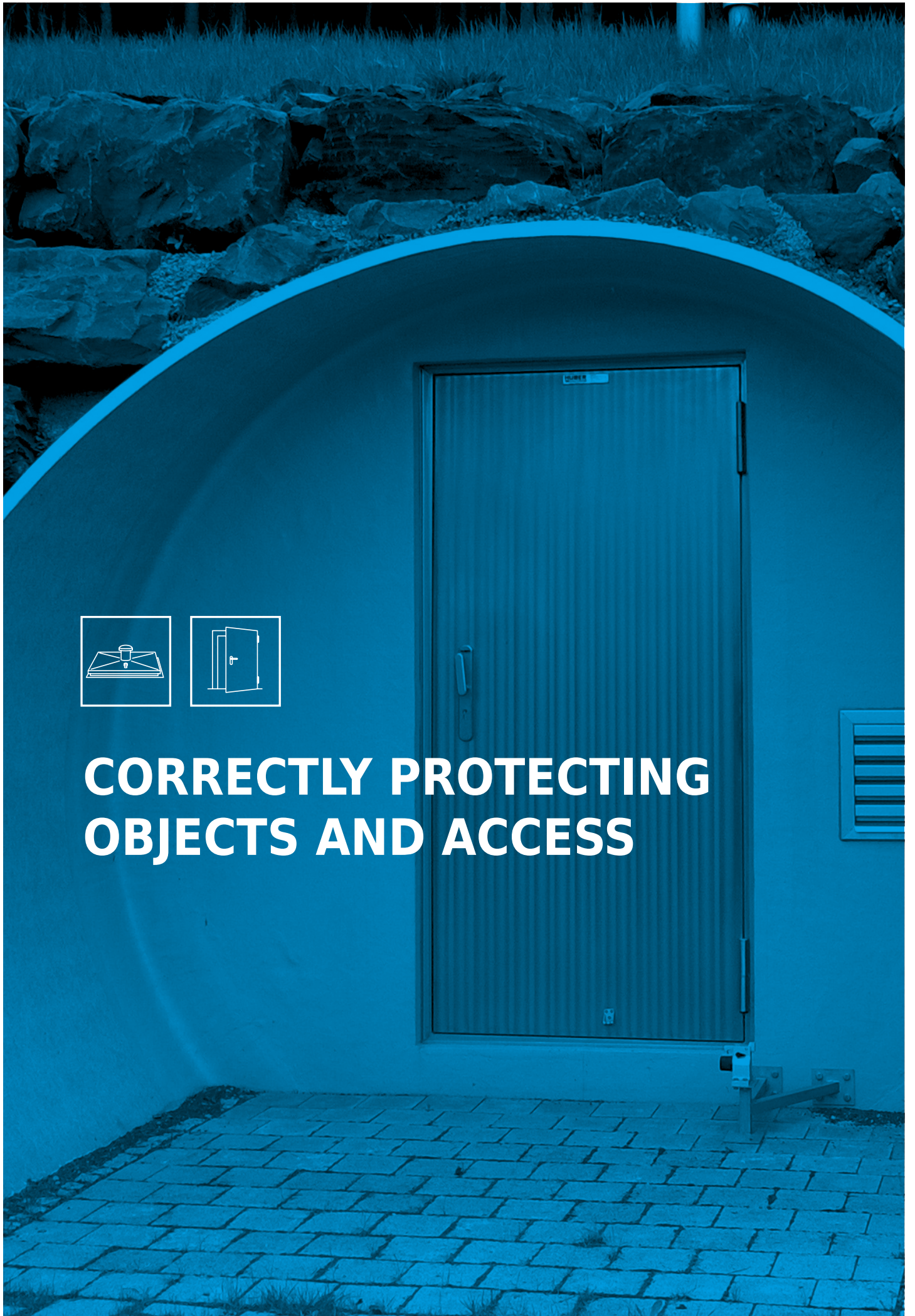
- ▶ Easy operation
- ▶ Easy installation
- ▶ Various versions possible: foldable, foldable and extendable, attachable and retractable



HUBER Manhole Cover SD5 with access aid.



CORRECTLY PROTECTING OBJECTS AND ACCESS



How to properly protect your assets: focus on safety doors and manhole covers

Securing assets and infrastructure with high-quality security solutions is an essential part of an effective security management system. Protect assets and ensure staff safety, thus increasing operational efficiency.

That's why you should properly secure your facilities and properties with high-quality security doors, blinds and manhole covers:

- ▶ **Prevent unauthorised access:** Protect sensitive areas and facilities from theft and vandalism.
- ▶ **Weatherproofing:** Ensures the long-term integrity and functionality of the equipment.

- ▶ **Compliance with safety standards and regulations**
- ▶ **Ensuring operative continuity:** Minimise downtime due to damage, theft or unauthorised access.



HUBER Manhole Cover SD3/RC3.



HUBER Security Door TT2.1/RC3, for buildings with intrusion alarm system.



HUBER Manhole Cover SD7/RC4, accessible.



RC3 and RC4 are tested certifications in accordance with DIN EN 1627, which assess the resistance of components to break-in attempts.

Resistance class RC3 for increased protection against perpetrators with special tools. Added protection to common surveillance systems.

Resistance class RC4 for maximum protection against perpetrators with heavy equipment. Recommended for systems without an additional intrusion alarm system.



HUBER Safety Door TT2 – the right protection for your assets

High-quality materials, sophisticated security mechanisms and versatile customisation options provide optimum protection and durability.

A first-class choice for demanding security needs:

- ▶ Reliable protection
- ▶ Versatile frame types
- ▶ Maximum safety
- ▶ Durable and low-maintenance
- ▶ Additional surveillance options
- ▶ Optional cylinder pulling protection (for RC4)

i

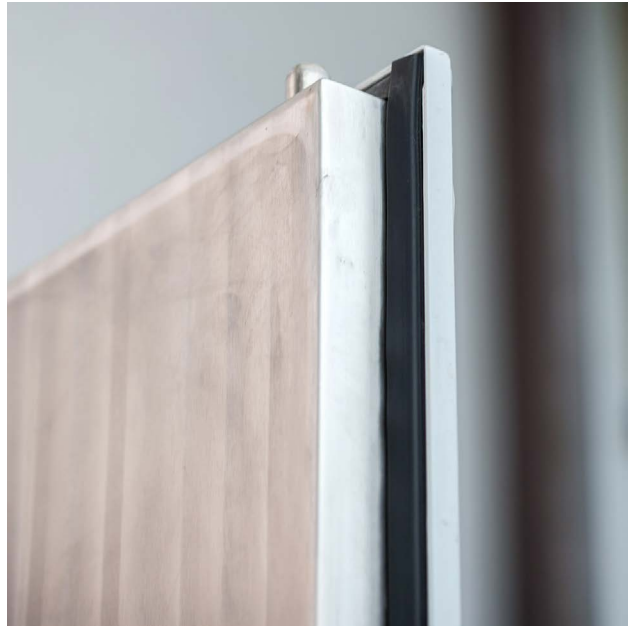
Meet safety standards with HUBER stainless steel equipment parts

- ▶ **High-quality stainless steel** results in long-lasting products.
- ▶ **High quality of workmanship** reduces maintenance frequency.
- ▶ Products **“Made in Germany”**.
- ▶ **Increased standards according to certifications.**
- ▶ **Appealing design** adapts to the application and environment.
- ▶ **Low risk of corrosion**
- ▶ **Flexibility and high product variability** enable a wide range of individual production dimensions.

Reliable security solution with high burglary resistance, convenience and flexibility

HUBER TT2 stainless steel safety doors with RC3 and RC4 test certificates offer security for many different areas of application.

- ▶ **Tested burglary resistance:**
Guarantees a high level of security against attempted break-ins with tools such as screwdrivers, saws and drills.
- ▶ **Optimum insulation:**
The foamed door panel and double rubber seal provide effective insulation and protection against weather and noise.
- ▶ **Additional security:**
Integrated locking system from the door into the frame.
- ▶ **Anti-panic device:**
The door is equipped with an anti-panic device that allows easy and quick exit from the building in an emergency.



Detailed view of sealing system.



Detailed view of anchor bolts.

- ▶ **Anchor bolts:**
Additional security that prevents the door leaf from being levered out, even when sawing off the hinges.
- ▶ **Versatile frame types:**
Different frame types to meet individual requirements and architectural conditions.
- ▶ **High level of sound insulation:**
With a sound insulation level of 34/29 dB, the door creates a quieter environment indoors.
- ▶ **Flexible adjustment options:**
Specific requirements, such as electronic access control systems or additional security devices, are possible with additional upgrades.



Would you like more information about security doors?

Technical data sheets and further product information is available at www.huber.co.uk/stainless-steel-equipment-uk



OPTIMUM PROTECTION AND DURABILITY – BURGLARY PROTECTION



Our specialists in burglary protection – HUBER manhole covers SD3, SD4 and SD7

The HUBER Manhole Covers SD3, SD4 and SD7 offer optimum protection and durability thanks to their high-quality materials, special security mechanisms and versatile adjustment options. They are the ideal solution for demanding security requirements in various areas of application.

- ▶ **Tested for resistance class RC3 and RC4** in accordance with DIN EN 1627. Meets stringent security standards, providing increased protection against attempted break-ins.
- ▶ Specially developed **drilling-resistant locking system**.
- ▶ **High-quality security technology** protects against burglary and vandalism damage.
- ▶ **Suitable for Ex zone 1**. Safe for use in potentially explosive areas.
- ▶ **Completely made of stainless steel**. Durable and low costs to maintain.
- ▶ **Customizable** with various additional features to meet specific requirements.

SD3 and SD4

Raised manhole cover:

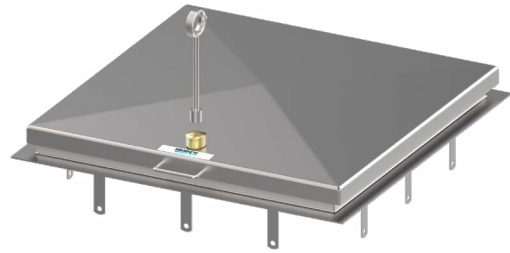
Raised position for special application requirements.

SD7

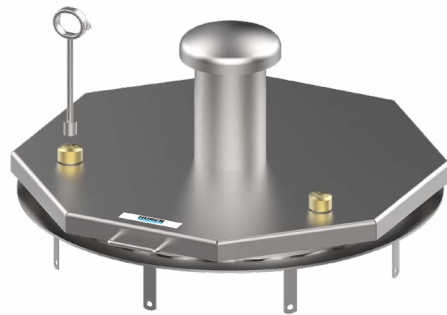
Manhole cover flush with the ground:

Blends in with surroundings and minimises tripping hazards.

- ▶ **Suitable for various load classes** (B125, D400, E600), from light to heavy traffic.



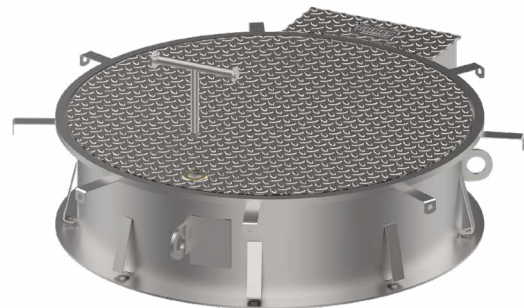
HUBER Manhole Cover SD3-RC3.



HUBER Manhole Cover SD4-RC3, with fume hood.



HUBER Manhole Cover SD7-RC4.



HUBER Manhole Cover SD7.R.



**CLEAN DRINKING
WATER – HYGIENE
IN THE TANK**

Clean drinking water is paramount!

Hygiene in your drinking water reservoir:

Hygiene problems can arise when the water level is lowered. Depending on ambient air quality, there is a certain risk that higher amounts of dust, bacteria, viruses and germs may pass into the stored drinking water.

Filtering the supply air reduces hygiene risks.

HUBER Air Filter Systems reliably eliminate this risk.

- ▶ Optimum hygiene in drinking water reservoir
- ▶ Particulate filter with 99.99% separation efficiency
- ▶ Only filtered ambient air can enter the water reservoir
- ▶ Monitoring for blocked filters



HUBER Aeration/Deaeration Plant L252.



HUBER Water Chamber Door TT1.1 W.

Protection towards the outside with special access doors for water chambers

- ▶ Double-walled and completely made of stainless steel.
- ▶ Universally applicable: as access to buildings, control rooms, especially for systems in disposal and supply.
- ▶ Meet all necessary medium-level security requirements

HUBER Water Chamber Door TT1.1 W:

A ready-to-use access door specially developed for entering water chambers.

Ensure hygiene in the drinking water reservoir

Safeguarding hygiene in the water reservoir with aeration/deaeration plants:

- ▶ Continuous and adequate ventilation **minimises the risk of contamination.**
- ▶ **The formation of anaerobic bacteria is prevented** by adequate ventilation.
- ▶ **Minimise deposits and sediments**, improve water quality and reduce the need for cleaning.
- ▶ **Prevents unpleasant odours** caused by the degradation of organic materials or anaerobic conditions.

HUBER aeration/deaeration plants offer:

- ▶ Various system sizes
- ▶ Different throughputs
- ▶ Design in accordance with DVGW Worksheet W 300-1
- ▶ Compliance with important standards and regulations
- ▶ Condensate drainage with ball valve
- ▶ Various special equipment options possible
- ▶ Option: pressure transducer monitoring filter contamination



HUBER Aeration/Deaeration Plant L361.



HUBER Water Chamber Door TT1.1 W, various versions.

Stainless steel water chamber doors

Reliable, durable and hygienic solution for water storage systems. The right choice for securing and protecting the water supply.

HUBER Water Chamber Door TT1.1 W

- ▶ Foamed door panel
- ▶ Double rubber seal
- ▶ Different frame types available
- ▶ Seal suitable for drinking water

Strong performance. Low maintenance required

Stainless steel pressure doors made of AISI 304 L or AISI 316 L are optimally suited for use in drinking water reservoirs because of their **corrosion resistance, hygiene, stability and security.**

Resistance to corrosion.

Prevents rust and thus extends the service life of the door.



Hygiene.

Pore-free material, easy to clean, reduces the spread of germs and potential pollutants.



Standards and certifications.

Seals and materials comply with the applicable regulations.



Different frame types.

Frame for embedding in concrete or retrofitting.



Long-term cost-effectiveness.

Under the right conditions, stainless steel is resistant to mechanical stress, chemical influences and temperature changes.



100% waterproof.

10 – 30 mWC. Prevents leaking drinking water.



HUBER Pressure Door TT7.



Safety at work.

Safe access for maintenance staff.



Low maintenance needs.

Low risk of damage and wear. Low energy and resource requirements for repairs and maintenance.

HUBER Pressure Door TT7.



Would you like more information about hygiene in drinking water?

Technical data sheets and further product information is available at www.huber.co.uk/stainless-steel-equipment-uk



Protect your infrastructure from flooding and other extreme weather conditions

Plan ahead and protect critical infrastructure from weather extremes, especially flooding.

Proper protection is essential to ensure the functionality, security and resilience of these systems.

Our products for your flood protection:

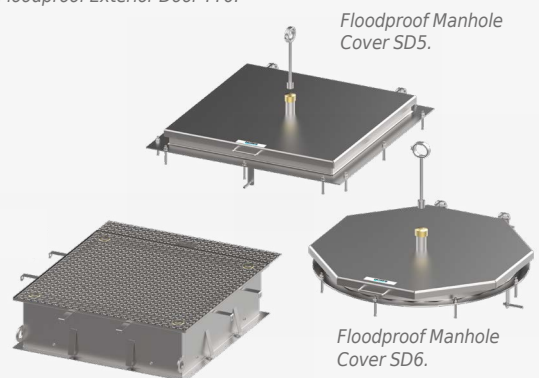
- ▶ **HUBER Manhole Cover SD5, SD6**
Floodproof up to 1 mWC, optionally up to 5 mWC
- ▶ **HUBER Manhole Cover SD7-RC3/RC4**
Flush with ground, floodproof up to 1 mWC, optionally up to 5 mWC
- ▶ **HUBER Safety Door TT2.F**
Floodproof up to 1.2 mWC
- ▶ **HUBER Flood-proof Exterior Door TT6**
Single-leaf, floodproof up to 2 mWC
- ▶ **HUBER Pressure-Tight Door TT7/ TT7.30**
Pressure-tight up to 10 m/ 30 m water gauge

HUBER Safe Access Solutions offer you safety, protection against water ingress and low maintenance requirements.



Floodproof Exterior Door TT6.

Security Door TT2.F.



Flush Manhole Cover SD7-RC3/RC4.

Floodproof Manhole Cover SD5.



Your investment pays off. Benefits of stainless steel

Stainless steel for drinking water or wastewater:

- ▶ Excellent corrosion resistance
- ▶ High levels of hygiene
- ▶ Resistant to aggressive chemical substances in wastewater

Hygiene-related benefits:

- ▶ Easy to clean and disinfect
- ▶ Meets high hygienic standards

Economic advantages:

- ▶ Long service life
- ▶ Minimum maintenance costs
- ▶ Eliminate expensive renovation measures

Additional advantages:

- ▶ Higher resistance than concrete, cast iron or steel
- ▶ Fully recyclable material
- ▶ Modern and appealing look, especially for manhole covers

Correctly handling stainless steel products

How to correctly handle stainless steel equipment:

- ▶ Do not store with other metals.
- ▶ Do not fix with galvanized fixing material.
- ▶ Do not permanently connect to other metals.
- ▶ Do not clean with ferritic steel brushes.
- ▶ Avoid contact with high concentrations of chlorine.
- ▶ Do not use grinding discs containing iron.
- ▶ No thermal or mechanical treatment without subsequent pickling and passivation.

Professional processing guarantees a long service life:

- ▶ Avoid cold welding of threaded connections.
- ▶ Separate stainless steel electrolytically from other metals.
- ▶ Use stainless steel wall penetrations and take thermal expansion into account.
- ▶ Careful surface treatment with suitable cleaning agents.
- ▶ Use protective sheathing when laying underground in ferrite-containing floors.

Make use of our expertise.

HUBER – high quality machines, plants and stainless steel equipment for the treatment of water, wastewater and sludge

Our high-quality machines, systems and stainless steel equipment parts for municipal and industrial water, wastewater and sludge treatment help solve global water problems.

We offer innovative and tailor-made solutions that are precisely procured to your application and situation.

HUBER solutions made in Germany – for local and global customers

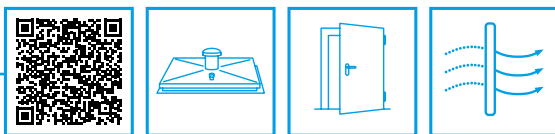
- ▶ **43,000 m²** production area at the main site in Berching, **80,000 m²** production area – worldwide
- ▶ Partners and subsidiaries in **over 60 countries** worldwide
- ▶ More than **150,000** systems installed
- ▶ **Global service** – guaranteed availability worldwide



HUBER headquarters in Berching.



HUBER production facilities in Berching.



Safer at all levels!

We offer you many more products from the SAS range

HUBER stainless steel products are the best solution for use in water supply and wastewater treatment. For Municipal and Industrial applications. Choose the material that meets the highest demands.

Safe Access Solutions and high-quality equipment made of stainless steel for:

- ▶ Drinking water supply, treatment,
- ▶ Storage and distribution
- ▶ Wastewater treatment
- ▶ Rainwater overflow basin
- ▶ Biogas plants
- ▶ Access passageway