

## Collapsible hand post EH VS



The figure shown here may contain special accessories.

**Single-beam entrance aid**, with design certification in accordance with DIN 19572, made of 1.4404 (AISI 316 L) stainless steel. Available as either a removable and portable or as stationary collapsible unit. Consisting of a handle and guide.

**Guide** with two holes, diameter: 12 mm, for bolted fixing to the wall of the manhole. With a possibility of adjustment for the handle.

**Handle** of distortion-free pipe, 33.7 x 3.6 mm, total length: 1500 mm.

Completely shielded arc welded, acid-treated in a pickling bath and passivated.

### Options:

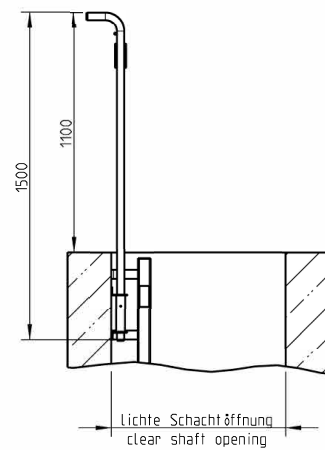
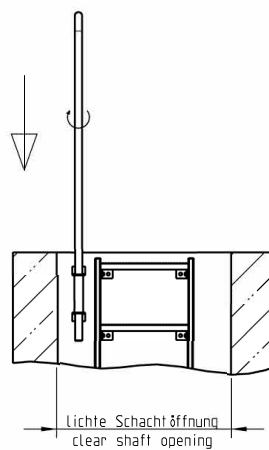
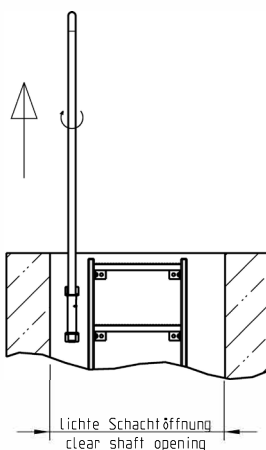
- Stainless steel fixing material: stud anchors

### Special design:

- Suitable for 'econorm' manholes, wall distance to beginning of insertion opening: 158 mm

Montagevariante A installation option A  
Herausnehmbar-removable-transportable

Montagevariante B installation option B  
Stationär-versenkbarestationary-collapsible



Option	Order no.
grab handle	EH grab handle
guide tube	EH guide tube



Collapsible hand post EH VS

Subject to technical modification | Drawing no. 51000468, 5.2022

HUBER SE | Industriepark Erasbach A1 | D-92334 Berching | Telefon: +49 8462 201-0 | info@huber.de | [www.huber.de](http://www.huber.de)